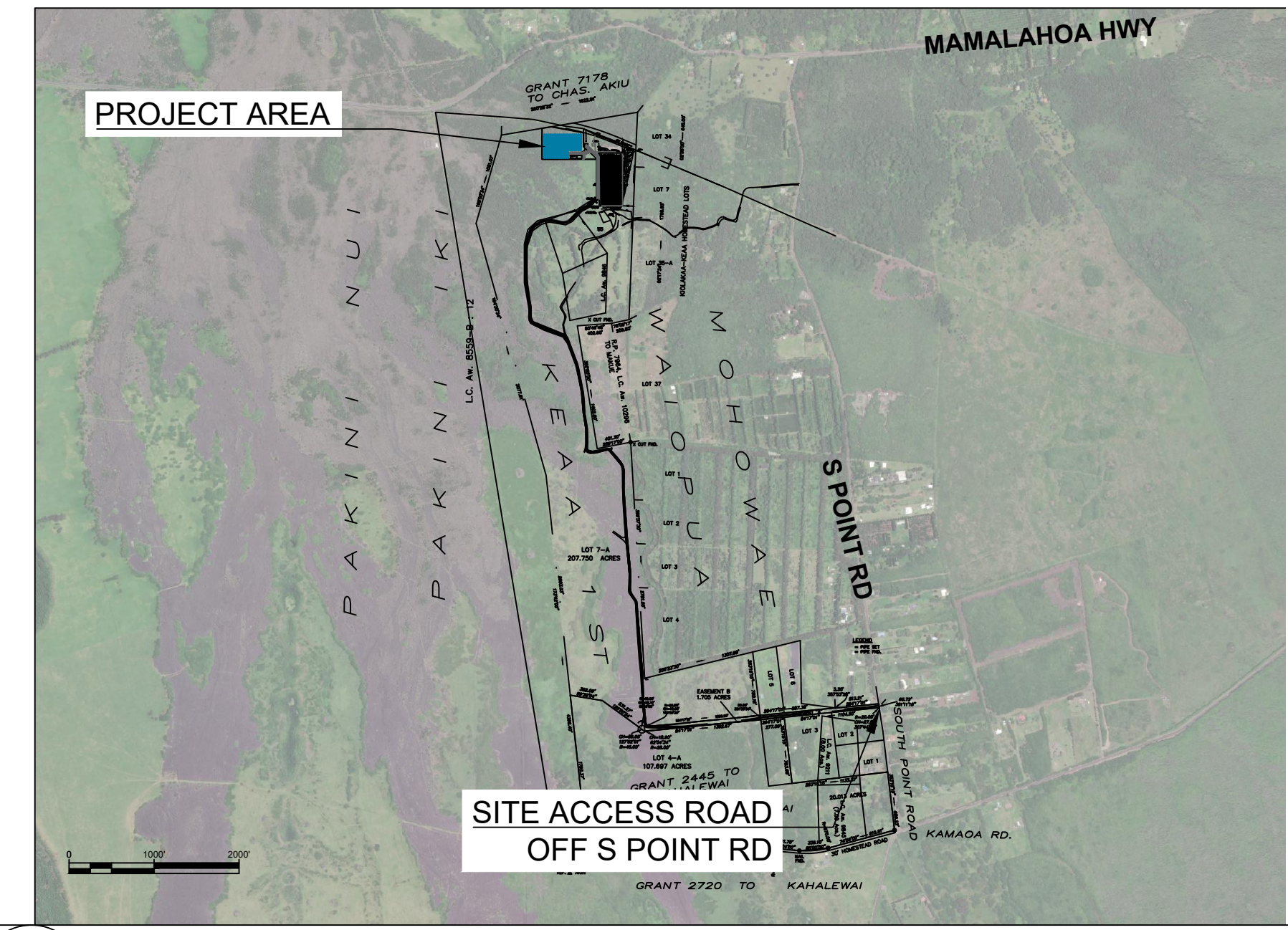
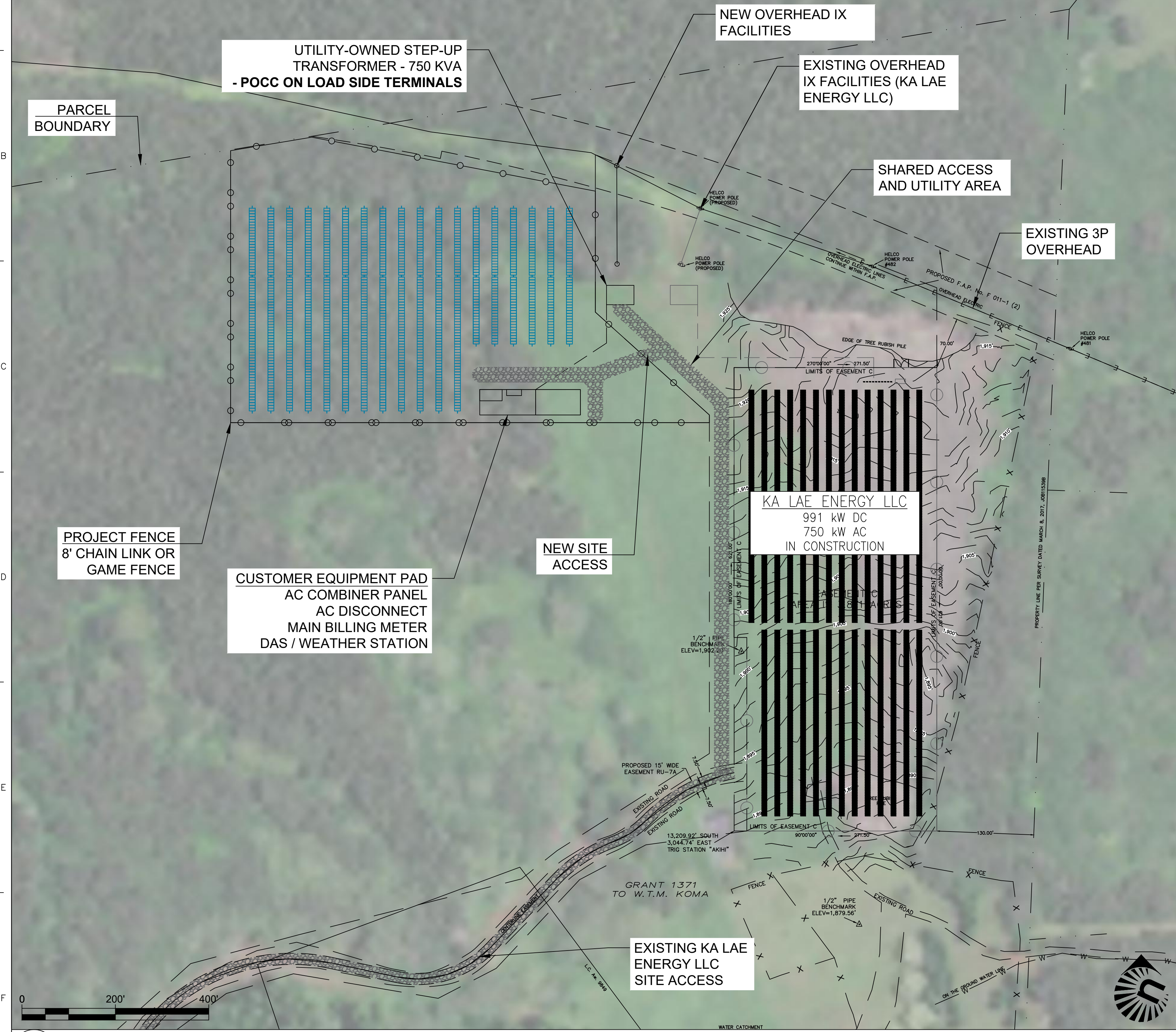


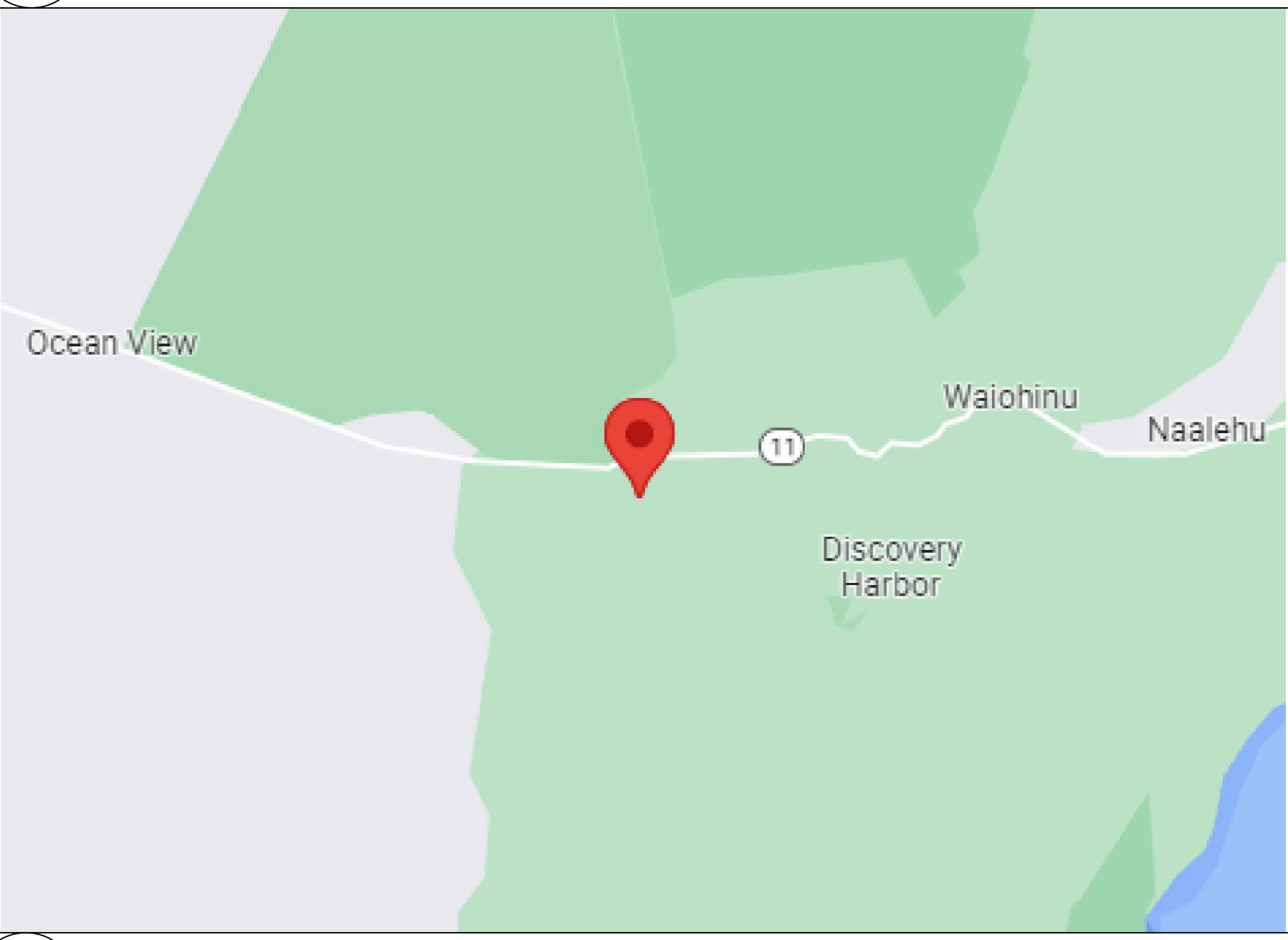
SITE NOTES

1. CUSTOMER WILL COORDINATE WITH UTILITY ON TECHNICAL DETAILS AND LOCATION OF RELEVANT EQUIPMENT.
2. MINIMUM DISTANCE FROM FENCE TO ARRAY = 20'
3. PITCH = 25'

1622.91'



2 E.20 SITE ACCESS POINT



3 E.20 VICINITY MAP

SYSTEM SPECIFICATIONS

TOTAL SOLAR MODULE
1152 - HANWHA Q.PEAK DUO 580W

TOTAL INVERTER
5 - CPS SCH100KTL-D0/US-480

MOUNTING SYSTEM
1 - ATI DURATRACK SINGLE AXIS TRACKER

TOTAL SYSTEM SIZE
668.16 KW DC
500 KW AC

FENCED AREA
4.23

4 E.20 NOTES & SPECIFICATIONS

File: C:\Users\jmc\OneDrive\Temp\Project\Ka Lae 1 - M2_Rv5_20230407.dwg Layout: E.20 User: Lucas Murphy Plotter: Apr 07, 2023 - 11:17am Xref's

NO	REV	DATE	DESCRIPTION	CHKD	DATE	APPVDATE
8	MLM	4/7/23	NO BESS			
7	MLM	3/27/23	ALTA			
0	PP	4/15/21	INTERCONNECTION DOCUMENT			
			NO DRWDATE			
			REVISION			



KA LAE SOLAR FARM - M2, LLC
93-5570 KAI MAKANI PLACE
NAALEHU, HI 96772

PROJ. NO.: TBA DATE: 4/7/23

1750 15TH STREET, SUITE 200
WWW.PIVOTENERGY.NET

SITE PLAN

SOLAR ARRAY WORK PLAN

DRAWING NUMBER:
E.20

SHEET NUMBER:

REVISION 8